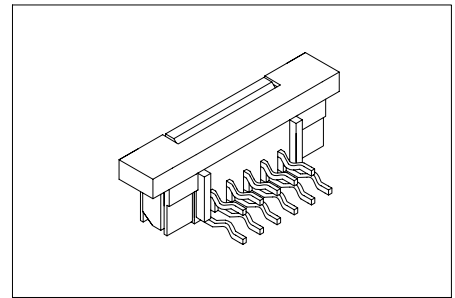


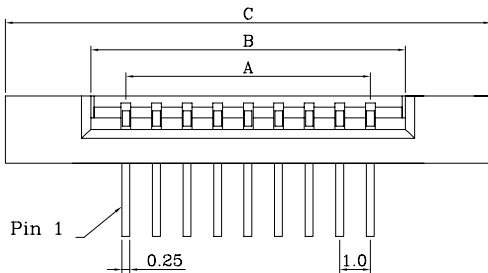
Specifications/技术参数:

Electrical/电气特性:
 Current Rating (额定电流): 0.5A
 Voltage Rating (额定电压): 50V
 Withstand Voltage (耐压值): 500VAC for one minute
 Contact Resistance (接触电阻): 30mΩ max
 Insulation Resistance (绝缘电阻): 500MΩ min
 Operating Temperature (工作温度): -25°C ~ +85°C

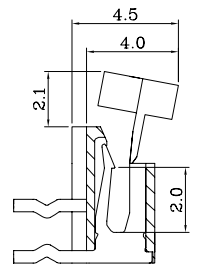
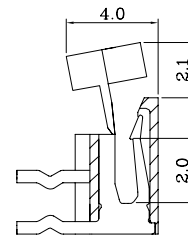
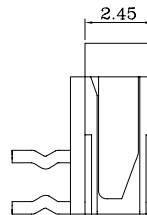
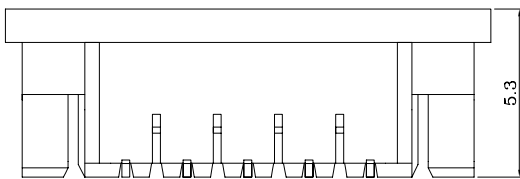
Physical/物理特性:
 Insulator (塑胶本体): Nylon46
 Flammability Rating (防火等级): UL 94V-0
 Contacts (接触件): Phosphor Bronze
 Contacts plating (接触件电镀): Tin-plated



Dimension/尺寸: mm

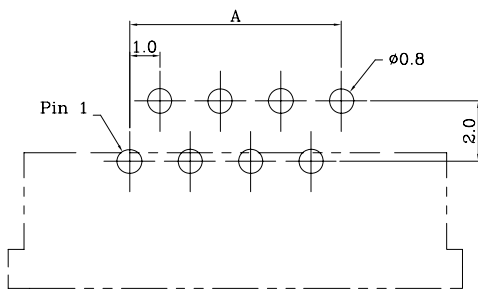


A = 1.0 * No. of Positions - 1.0
 B = 1.0 * No. of Positions + 1.1
 C = 1.0 * No. of Positions + 7.0

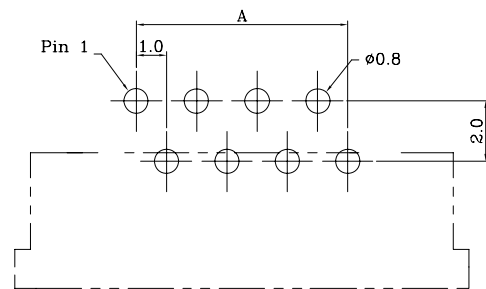


Upside Contact/上触

Bottom Contact/下触

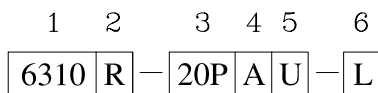


PCB LAYOUT(TYPE-A)
线路板布局图(正脚位)



PCB LAYOUT(TYPE-B)
线路板布局图(反脚位)

Ordering Code/订购型号:



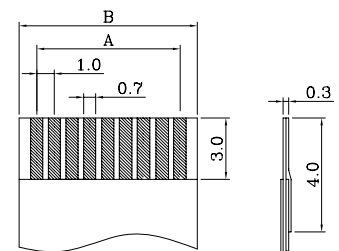
1. Series No./系列号: 6310
2. PCB Mount Type/安装类型:
R = Horizontal DIP (弯插)
3. Poles/位数:
04P ~ 40P

4. PCB Mount Style/安装方式:

- A = Type-A (正脚位)
- B = Type-B (反脚位)

5. Contact Style/接触方式:

- U = Upside Contact (上触)
- B = Bottom Contact (下触)



Applicable FFC
适用的FFC线

6. Options/选项:

- L = With Lock (带锁扣)