

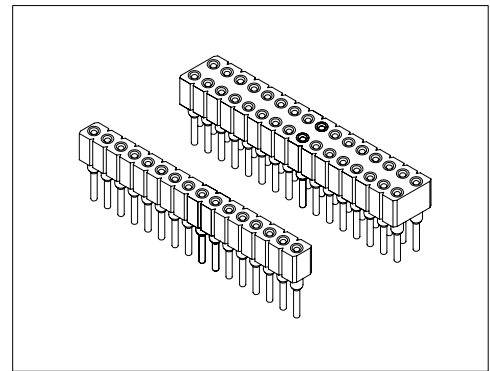
## Specifications/技术参数:

### Electrical/电气特性:

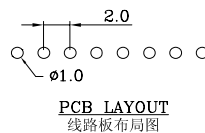
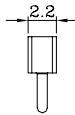
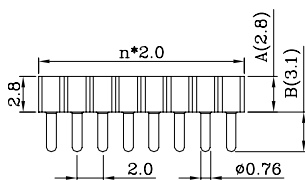
Current Rating (额定电流): 3A  
 Withstand Voltage (耐压值): 1000VAC for one minute  
 Contact Resistance (接触电阻): 10mΩ max  
 Insulation Resistance (绝缘电阻): 1000MΩ min  
 Operating Temperature (工作温度): -55°C ~ +125°C

### Physical/物理特性:

Insulator (塑胶本体): PPS  
 Flammability Rating (防火等级): UL 94V-0  
 Sleeve (套筒): Brass  
 Contact clip (接触片): Beryllium copper  
 Mating pin (配合圆针):  $\phi 0.40$  to  $\phi 0.66$ mm  
 Insertion Force (插入力): 0.7N typ (在用 $\phi 0.46$ mm钢针的情况下)  
 Withdrawal Force (拉出力): 0.4N typ (在用 $\phi 0.46$ mm钢针的情况下)  
 Mechanical life (机械寿命): 500 cycles min

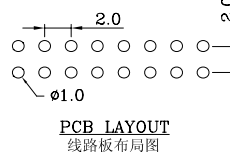
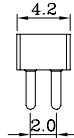
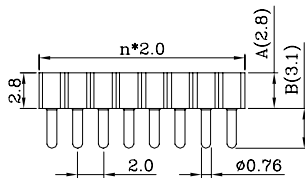


## Dimension/尺寸: mm



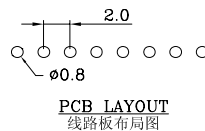
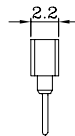
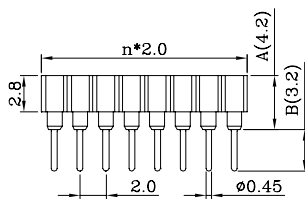
### 6100-2S-1\*nPG-2.8/3.1

Straight socket connector low profile height 2.8mm: solder tail single row, low profile  
 单排直针短体插座, 离板高度2.8mm  
 Poles/位数: 2 to 40 contacts  
 Standard number of contacts/常用芯数: 40



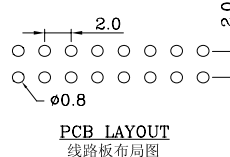
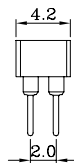
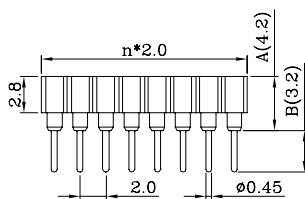
### 6100-2S-2\*nPG-2.8/3.1

Straight socket connector low profile height 2.8mm: solder tail double row, low profile  
 双排直针短体插座, 离板高度2.8mm  
 Poles/位数: 4 to 80 contacts  
 Standard number of contacts/常用芯数: 80



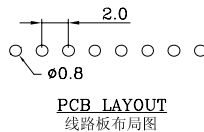
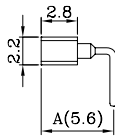
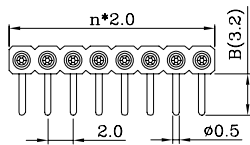
### 6100-2S-1\*nPG-4.2/3.2

Straight socket connector height 4.2mm: solder tail, single row  
 单排直针短体插座, 离板高度4.2mm  
 Poles/位数: 2 to 40 contacts  
 Standard number of contacts/常用芯数: 40



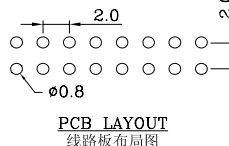
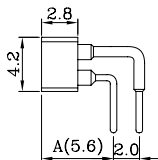
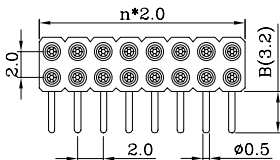
### 6100-2S-2\*nPG-4.2/3.2

Straight socket connector height 4.2mm: solder tail, double row  
 双排直针短体插座, 离板高度4.2mm  
 Poles/位数: 4 to 80 contacts  
 Standard number of contacts/常用芯数: 80



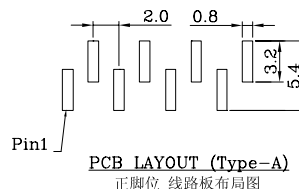
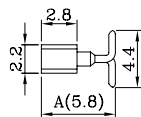
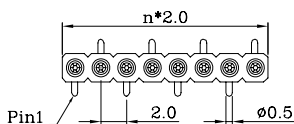
## 6100-2R-1\*nPG-5.6/3.2

Right angle socket connector: solder tail, single row  
单排弯针焊板插座  
Poles/位数: 2 to 40 contacts  
Standard number of contacts/常用芯数: 40



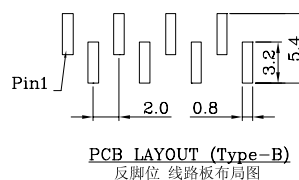
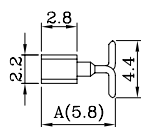
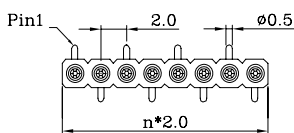
## 6100-2R-2\*nPG-5.6/3.2

Right angle socket connector: solder tail, double row  
双排弯针焊板插座  
Poles/位数: 4 to 80 contacts  
Standard number of contacts/常用芯数: 80



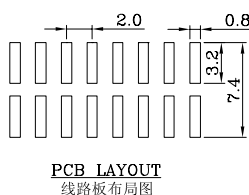
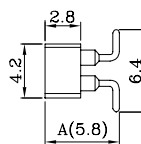
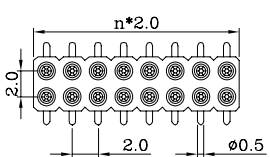
## 6100-2SMS-1\*nPG-5.8-A

SMT socket connector: single row perpendicular mount  
单排立贴焊板插座(正脚位)  
Poles/位数: 2 to 40 contacts  
Standard number of contacts/常用芯数: 40



## 6100-2SMS-1\*nPG-5.8-B

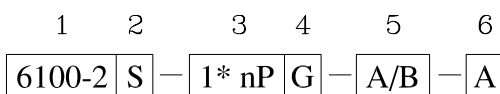
SMT socket connector: single row perpendicular mount  
单排立贴焊板插座(反脚位)  
Poles/位数: 2 to 40 contacts  
Standard number of contacts/常用芯数: 40



## 6100-2SMS-2\*nPG-5.8

SMT socket connector: double row perpendicular mount  
双排立贴焊板插座  
Poles/位数: 4 to 80 contacts  
Standard number of contacts/常用芯数: 80

### Ordering Code/订购型号:



1. Series No./系列号: 6100-2

2. PCB Mount Type/安装类型:

S = Straight (直插)

R = Right Angle (弯插)

SMS = Vertical SMT Type (立贴)

3. Poles/位数:

Single/单排: 1\*2P~40P

Dual/双排: 2\*2P~40P

4. Contact Plating/接触件电镀:

S = Selective Gold(半金)

G = Gold Flash(全金)

5. Dimension/尺寸: A/B

6. PCB Mount Style/安装方式:

A = Type-A (正脚位)

B = Type-B (反脚位)