

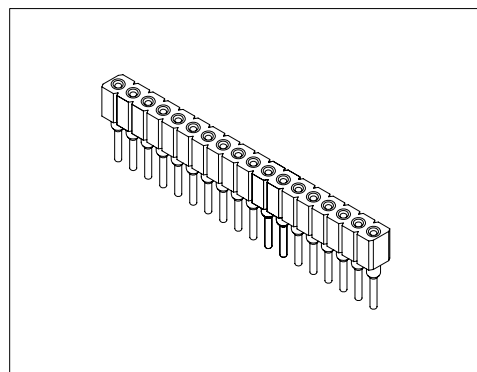
Specifications/技术参数:

Electrical/电气特性:

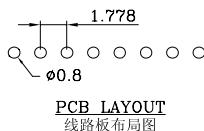
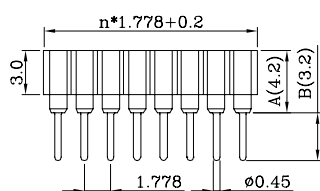
Current Rating (额定电流): 1A
 Withstand Voltage (耐压值): 1000VAC for one minute
 Contact Resistance (接触电阻): 10mΩ max
 Insulation Resistance (绝缘电阻): 1000MΩ min
 Operating Temperature (工作温度): -55°C ~ +125°C

Physical/物理特性:

Insulator (塑胶本体): Glass filled thermoplastic PPS
 Flammability Rating (防火等级): UL 94V-0
 Sleeve (套筒): Brass
 Contact clip (接触片): Beryllium copper
 Mating pin (配合圆针): $\phi 0.40$ to $\phi 0.56$ mm
 Insertion Force (插入力): 2N typ (在用 $\phi 0.46$ mm钢针的情况下)
 Withdrawal Force (拉出力): 1N typ (在用 $\phi 0.46$ mm钢针的情况下)
 Mechanical life (机械寿命): 500 cycles min



Dimension/尺寸: mm



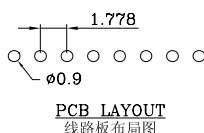
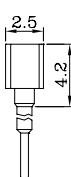
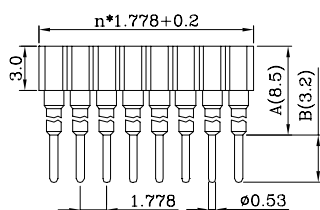
6100-1S-1*nPG-4.2/3.2

Straight socket connector: single row
单排直针插座连接器

Pitch/间距: 1.778mm

Poles/位数: 2 to 32 contacts

Standard number of contacts/常用芯数: 21 and 32



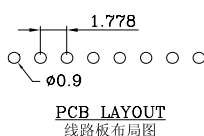
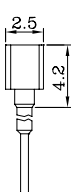
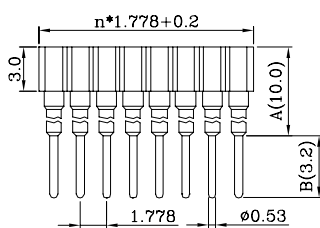
6100-1S-1*nPG-8.5/3.2

Straight socket connector: single row
单排直针插座连接器

Pitch/间距: 1.778mm

Poles/位数: 2 to 32 contacts

Standard number of contacts/常用芯数: 21 and 32



6100-1S-1*nPG-10.0/3.2

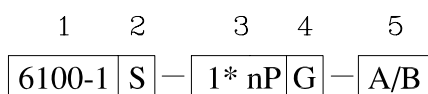
Straight socket connector: single row
单排直针插座连接器

Pitch/间距: 1.778mm

Poles/位数: 2 to 32 contacts

Standard number of contacts/常用芯数: 32

Ordering Code/订购型号:



1. Series No./系列号: 6100-1

2. PCB Mount Type/安装类型:

S = Straight(直插)

3. Poles/位数: 1*2P~32P

4. Contact Plating/接触件电镀:

S = Selective Gold(半金)

G = Gold Flash(全金)

5. Dimension/尺寸: A/B