

MDP SERIES Power Din Locking 8 Parts Assembly Type

Specifications/技术参数:

Electrical/电气特性:

Current Rating (额定电流):

3P: Pin No.1&2&3: DC20V, 7.5A max

Pin No.3: DC20V, 1.0A max

4P: DC20V, 7.5A max

Withstand Voltage(耐压值): AC 250V For 1minute

Contact Resistance(接触电阻): 30mΩ max

Insulation Resistance(绝缘电阻): 50MΩ min. at DC 250V

Operating Temperature(工作温度): -25°C ~ +70°C

Physical/物理特性:

Body(内芯胶体): PBT +30% G.F UL94-V0

Contacts(接触件): Brass, Gold Flash

Housing(胶壳): ABS

Lock Bottom Cover(底盖锁扣): Brass, Nickel Plated

Lock Top Cover(顶盖锁扣): Brass, Nickel Plated

Pom Ring(圆环): POM

Spring(弹簧): Steel

Inner Housing(内壳): PVC

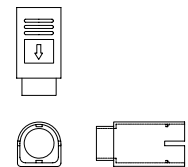
SR(尾卡): PVC



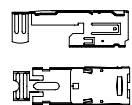
Body/内芯胶体:



Housing/胶壳:



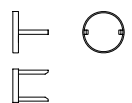
Lock Bottom Cover/底盖锁扣:



Lock Top Cover/顶盖锁扣:



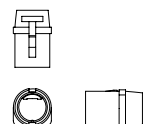
Pom Ring/POM环:



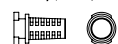
Spring/弹簧:



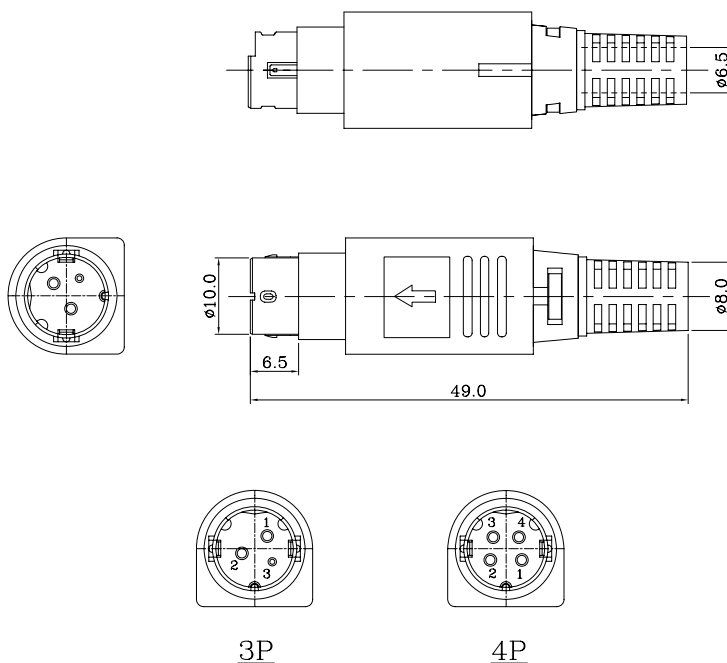
Inner Housing/内壳:



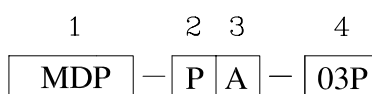
SR/尾卡:



Dimension/尺寸: mm



Ordering Code/订购型号:



1. Series No./系列号: MDP
2. Contact type/接触件类型: P = Plug(插头公针)
3. Housing type/壳体类型: A = Assembly(装配型)
4. Poles/位数: 3P, 4P